



SCHWEBD-S10031

# Triangular Shawl



Recommended Yarn

[schachenmayr.com](http://schachenmayr.com)

Follow us     

MEZ GmbH, 2017. All rights reserved







SCHWEBD-S10031

V.1/KD

Crochet



Intermediate



# Triangular Shawl

Design: Schachenmayr Designteam

## SIZE

Approx. 180 cm wide und 60 cm tall

## MATERIALS

**Schachenmayr Creative Lace**, 80 g ball  
Color 00083 (salsa color) balls 3  
Size 2.5 and 3 mm crochet hook  
Blunt yarn needle for weaving in ends

Yarn amounts are approximate. Make sure to purchase enough of the same dye lot in order to complete your project.

## THE BASICS

**Fan pattern:** Multiple of 19 + 15.

Worked with size 3 mm crochet hook according to chart. Beg first row by joining a new ball of yarn with a sl st to first st of foundation row (= top turning-ch), ch8, work rows 2 – 5. Beg each row with a turning-ch as shown on chart (count as first st). Join fan at end of row 4 with a sl st to dc on first row. \* Proceed with 10 sts to next fan. Work next fan. Rep from \* throughout. Beg on row 2, fans are worked separately and joined with a sl st to fans on row below.

**Foundation double crochet (fdc):** Chain 4. Yarn over, insert hook in first chain from hook, \* yarn over and pull up loop, yarn over and draw through 1 loop, yarn over and draw through 2 loops 2 times, yarn over, insert hook under the 2 loops of the chain at the bottom of the stitch just made. Repeat from \* for desired number of sts.

## GAUGE

**1 patt rep and 3 rows of fans** = 10 x 10 cm.

Take time to check your gauge. If you have too many stitches and rows, switch to larger hook. If you have too few stitches and rows, switch to smaller hook.

## INSTRUCTIONS

With size 2.5 mm crochet hook work 338 fdc. Cut yarn and fasten off.

Rejoin yarn as instructed and work first row of fans. Work the patt rep throughout until 18 fans have been worked. 2nd row of fans: Join each fan at arrow A to fan on row below and work each fan separately. End each fan with a sl st, cut yarn and fasten off = 17 fans. Cont in this manner, working 1 fan less on each subsequent row, ending with 1 fan on row 18. Cut yarn and fasten off.

## FINISHING

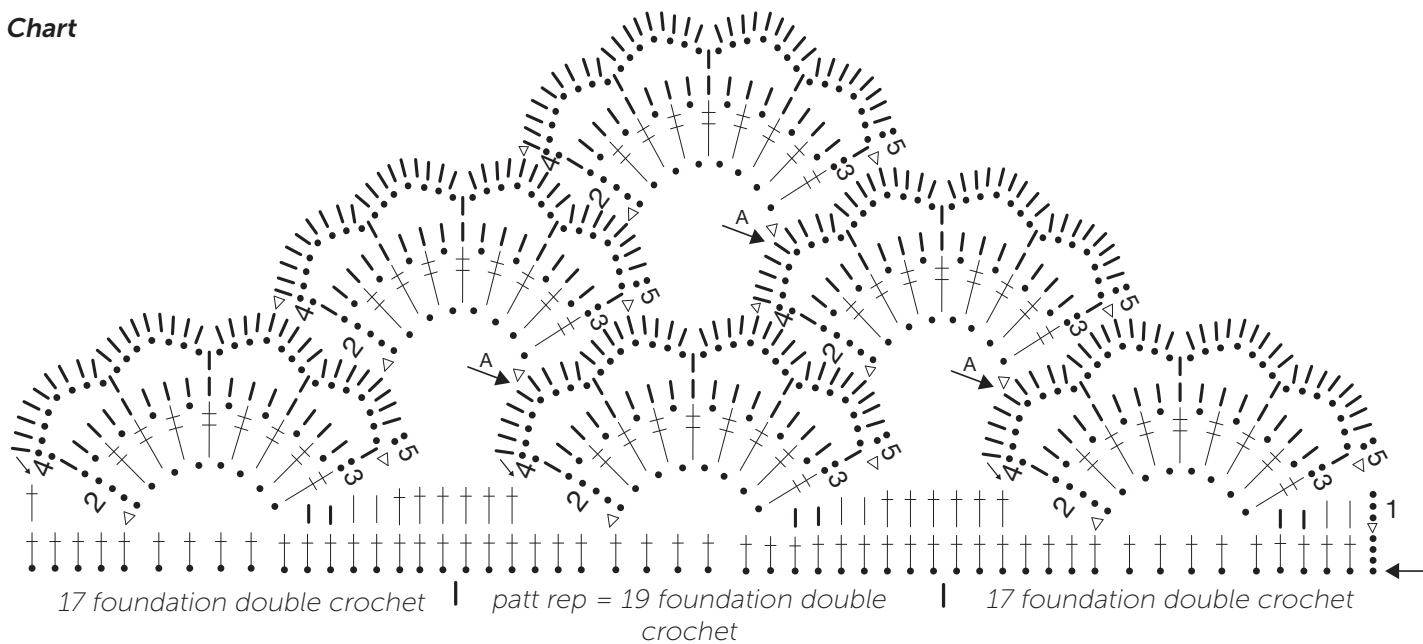
Carefully weave in all ends.

Pin shawl to measurements and block.

## TIPS

1. To avoid having to count a large number of chains, foundation chain is worked with separate ball of yarn. Make 30 – 40 fdc, then with 2nd ball of yarn begin working row 1. Make next 30 – 40 fdc, cont working row 1. Cont in this manner until foundation chain is complete and row 1 has been worked.
2. If you want a nearly reversible fabric, turn work after each row. If you start each new row at beg of previous row, the fabric will have a right and wrong side.
3. Weaving in ends: To avoid having to weave in lots of ends, place the tail end over the top of your next stitch then complete your stitch as you would normally. This securely hides your tail in the middle of the stitch. Continue in this manner for a few centimeters. Snip any excess yarn. At the end of each fan, fasten off leaving a long tail. Thread yarn needle with the tail and weave through stitches on last row.

## Chart



## Chart key

- = ch
- ▽ = sl st
- | = sc
- | = hdc
- † = dc
- †† = trc

## ABBREVIATIONS

- ch = chain
- dc = double crochet
- hdc = half double crochet
- sc = single crochet
- trc = treble crochet